



THE
WINDOW FILM
COMPANY®

01494 794477

www.windowfilm.co.uk

Fitting Instructions: Frostbrite Cut Pattern

Before you begin...

Please open your package and check the film carefully. If you find any creases, tears or other defects, please contact us immediately for advice. Do not remove the backing sheet or attempt to fit your film if you think it is faulty - we are unable to accept returns or provide refunds if installation has been attempted.

You will need...

To complete your installation, you will need: A plant spray bottle and a small quantity of washing up liquid, sharp scissors, a sharp knife or blade, a tape measure and paper towels. You will also require a plastic squeegee which is supplied with your order.

Prepare your window...

A clean window is vital to a successful installation, so take the time to clean your glass thoroughly before beginning the fitting process. Fill your spray bottle with water and combine with a few drops of washing up liquid.

You are now ready to fit your film...

1. Lay your film on a clean, flat surface, with the application tape facing upwards. The application tape will have a stamp on it, so if you are unsure which side is which, look for the stamp. Run your squeegee over the design, applying enough pressure to increase the bond between the application tape and the film.

2. Slowly remove the backing sheet. Please note that as your film is cut to size, the backing sheet will be larger than the film itself. Ensure you remove the backing sheet in a slow but steady fashion to avoid damaging the film. It is vital that you take care during this process, so please take your time and remove the backing sheet as carefully as possible.

3. Having removed the backing sheet, use your spray bottle to cover the entire surface of the film with soapy water solution.

4. Cover the entire surface of your window with the soapy water solution.

5. Pick up your film, and apply it to your window. The soapy water solution on the film and the glass will allow you to slide it into the correct position.

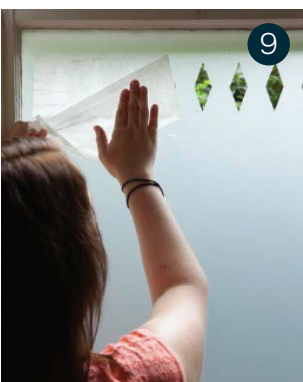
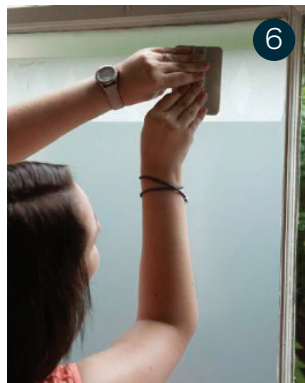
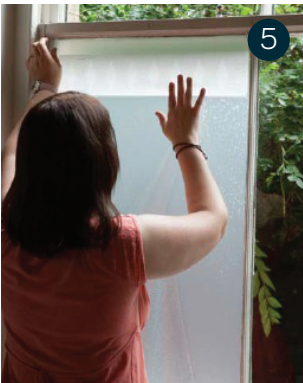
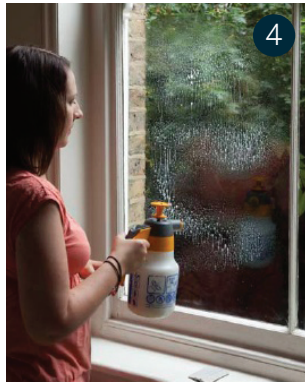
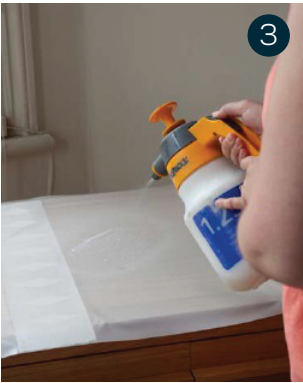
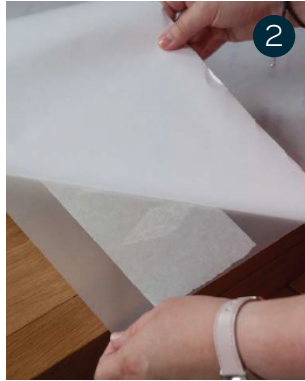
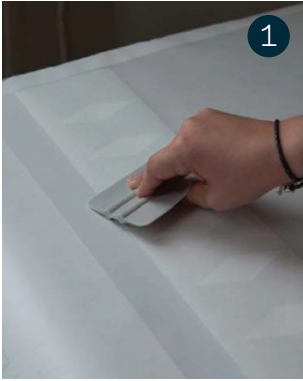
6. Once in place, spray the entire surface of the film with water. Then use your squeegee to push out any water or bubbles to the edge of the pane. Start at the top of the pane, and work methodically down the glass. Continue to squeegee until all moisture is gone.

7. Leave the application tape on for a 24 hour period. Failure to leave the film untouched for at least 24 hours could result in a failed application; do not continue the process without waiting.

8. After a minimum of 24 hours, spray the application tape with water and leave for five minutes.

9. After five minutes, slowly peel away the application tape to reveal the cut design. Take care to remove the application tape slowly but deliberately, keeping it close to the window as you peel it back.

10. Finally use paper towels to dry the window and the frame, being careful not to lift the film at the edges or corners.



For video fitting instructions visit: www.windowfilm.co.uk/video-instructions